



## Who we are?:

Melees Electrical Lines (Pty) Ltd (MEL) was started in South Africa with the goal of providing power construction services that would offer turnkey solutions in the energy sector. For nearly 39 years MEL has provided quality and accident-free solutions in the power sector in accordance with our clients needs.

The company was founded by Mr Carmine Angelucci. He started his electrical engineering career at the age of 16 in Italy before moving to Australia 2 years later. From Australia, Mr Angelucci came to South Africa in 1964 and started the journey of ensuring the company becomes a leading electrical construction company.

Melees Electrical Lines (Pty) Ltd has embarked on a new strategy under the leadership of its new Chief Executive Officer, Mr Japhta Motshegoa who has over 20 years of experience in construction of powerlines and related infrastructure. With this new journey, the company ensures an uninterrupted service delivery to the industry.

Melees Electrical Lines has got over 170 years of collective experience and is well equipped with excellent quality human resources which comprises of an array of specialised expertise in specialised fields. The company has also invested in excellent quality machinery and operating equipment in efforts to ensure optimal quality product and service delivery.



## Vision:

Melees Electrical Lines' vision is to be a world class leader in the supply of power construction services in Africa and globally by 2030.

## Mission:

Melees Electrical Lines' mission is to bring our client's visions to life through providing excellent quality services and innovative solutions, we are committed to providing excellent quality workmanship as well as to ensure that our operations are conducted with no harm to people and the environment. We also strive to be the preferred partner to our clients and an organisation that our employees are proud to be a part of.

## Values:

Safety – Our operations' number one priority is the safety of people and the environment.

Integrity – We strive to operate with integrity at all times

Respect – Respect is at the centre of all that we stand for as a business

Diversity – We strive to promote diversity in all spheres

Quality – Excellent quality is our number 1 priority, no compromise.



## What we do?:

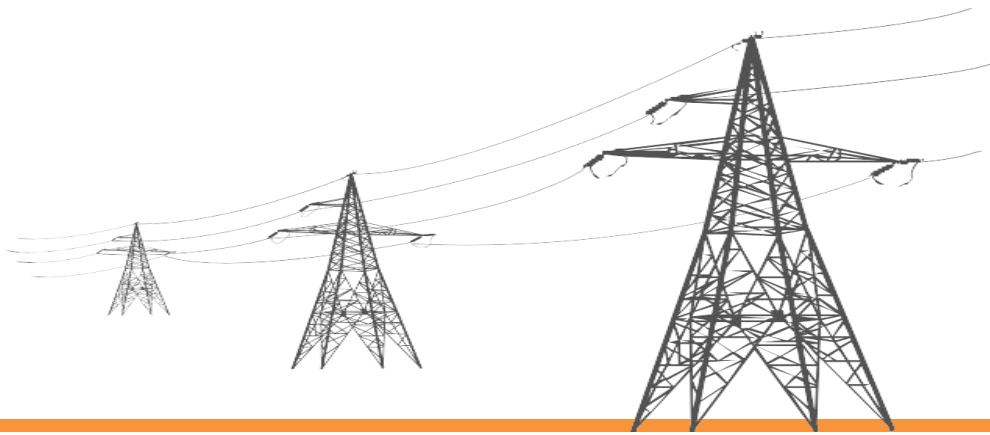
MEL has a reputation of high-quality service and product delivery to meet specific client's needs. The company has in-depth expertise in the design and construction of LV/MV and HV overhead powerlines ranging from 11kV to 765kV. This range of services presently offered may broadly classified as follows:

Powerline Profiling	Testing
Structure Design	Reticulation electrification
Foundation Design	Maintenance and Repair
Construction	OPGW
Transformer Maintenance and repairs	Generator Maintenance

MEL continues to develop its expertise in the electrical engineering field. An area that is currently being developed to ensure future competitiveness is work on electrical substations. Judging by work done in this field in the recent past, the company is on the right trajectory for greatness.

## What we have done?:

At MEL, we believe you cannot build a good reputation on what you are going to do but you earn by constantly serving with excellence. The company has almost 200 years of hands-on practical experience in the LV/MV and HV power lines industry accumulated globally.



Our client base is varied and includes:

<b>SUPPLY AUTHORITIES</b>
ESKOM
Botswana Power Corporation
Lesotho Electricity Authority
Swaziland Electricity Corporation
Cahora Bassa Mozambique
<b>MUNICIPALITIES</b>
<b>MINING INDUSTRIES</b>
<b>TESTING FACILITIES</b>
Apollo
Germiston
<b>TRANSFORMER MAINTENANCE AND REPAIRS COMPANIES</b>
<b>GENERATOR MAINTENANCE COMPANIES</b>

## Recent Projects

Project	Location	Discription	Progress of project	Completion date
Landau	Witbank	Landau 400kv line deviation	In Progress	
Hydra-Perseus	Bloemfontein	Hydra-Perseus 1 765KV Line	In Progress	
Athene	Richards bay	Refurbishment/replacement of Guy anchors 400kv Line	In Progress	
Poseidon Kopleegte	Eastern Cape	Poseidon Kopleegte 132kv line	Completed	25/05/2016
88 KV line refurbishment and maintenance	Lesedi local municipality	maintenance and refurbishment of a 88kv line between Heidelberg substation and Cydna substation	Completed	27/08/2017
Lulamisa Brynorth 88kv line rebuild	Eskom Braamfontein	88kv line rebuild in Lulamisa Brynorth with 8.3km of double- circuit twin tern lines. Line rebuild of 2.5km double-circuit line from Paulshof to Brynorth sub.	Completed	17/03/2017
Electrification of Moremedi park	Polokwane	Electrification of Moremedi park 550 household connection with 5km line extention	Completed	20/02/2019
Everest Makalu	Dealsville	Everet Makalu erection of 2 kimo towers (emergency work)	Completed	24/12/2020

## Previous Projects

JOB NO.	DESCRIPTION	LENGTH / KM'S	TYPE OF WORK	LOCATION	COMPLETION DATE
811	Lulamisa - Crowthorne dismantling Phase 1	n/a	Labour	ESKOM Central	May-18
817	Brakfontein - Monavoni 132kV power line	3	Supply & Erect	Tshwane Municipality/Billion	Apr-18
823	Gull ss	n/a	Supply & Labour	ESKOM	Mar-18
821	Re-erect tower 2055 East Line Cahora Bassa Moz	n/a	Erect	Transmission Grid Consulting/HCB Moz	Feb-18
739	705 A X rope assembly Apollo testing station	0.2	Erect	TAP	Jan-16
784	33kV Karoo ss Losberg	35	Foundations + Erect	SKA Projects Optic 1	Oct-15
723	400kV Landali by pass	1	Supply & Erect	TAP	Jun-15
678	400kV Athena Umfolozi (150 towers)	55.5	Preassembly	ESKOM Transdeco	Apr-14
812	Landau – Line deviation	n/a	Supply & labour & Erect	Eskom Mega watt	Oct-13
689	88kV Bighorn tailings	7	Supply & Erect	ESKOM Menlyn	May-13
647	88kV Gersey Vleifontein	6	Refurbish	ESKOM Bloemfontein	Mar-13
669	88kV Spudshaff Union	3.8	Supply & Erect	ESKOM Polokwane	Mar-13
637	88kV Spurtfontein Aquarius	5	Erect	ESKOM Pietersburg	Jan-13
717	88kV Ararat Millennium	12	Supply & Erect	ESKOM Menlyn	Jun-12
719	400kV Matimba Witkop by pass	0.3	Supply	TAP	Aug-11
749	Clamps	n/a	Supply	TAP	Aug-11
756	Henley Glen Douglas	0.5	Supply & Erect	ESKOM Meyerton	Sep-10
704	Hire of Merc Augur	n/a	Equipment	Optic 1	Jul-10
736	132kV Grootpan Goedgevonnen	8	Supply & Erect	ESKOM Menlyn	Jul-10
634	88kV deviations East Plats D/C	3	Supply & Erect	ESKOM Pietersburg	Jan-10
805	Modification of 705A tower NETFA/testing dbl x rope	n/a	Supply & Labour	Eskom Research Rosherville	Dec-09
803	88kV rebuild Lulamisa Olivedale	14.7	Labour	ESKOM Central	Dec-09
731	132kV Sandsloot Paulpietersrust	6.2	Supply & Erect	ESKOM Menlyn	Jul-09
735	88kV Hursthill ss line development	0.2	Supply & Erect	Alstom Johannesburg	Jul-09
703	2 x 132kV Sol Zandfontein	2x13.5	Supply & Erect	ESKOM Menlyn	Jun-09
CON CO 1	OPGW	270m	Supply	CONCO	Dec-08
807	Condale ss realign stays into feeder bays (44kV)	0.2	Supply & Erect	Roshqott	Dec-08
782	Dismantle and transport 88kV tower	n/a	Erect	TAP	Oct-08
747	275kV Marathon Prairie refurbish tower	n/a	Supply & Erect	ESKOM Tranmission	Aug-08

702	132kV Wapadrand ss development	0.5	Supply & Erect	ALSTOM Pretoria	Jun-08
663	88kV Spitskop Union	4.2	Supply & Erect	ESKOM Pietersburg	Mar-08
649	88kV DC line raising (25 spans)	5	Stringing only	Roadcrete	Feb-08
037 MD	88kV SA Chrome Ararat	16	Erect	ESKOM Pietersburg	Jan-08
800	132kV Cornwall hill ss Irene	0.5	Labour	ACTOM Pretoria	Nov-07
754	132kV DC Browel	1.5	Erect	ESKOM Rankom	Sep-07
694	88kV Natal (Newcastle)	4.2	Erect	ESKOM Marsott	Jun-07
688	88kV Karee Plats tailings	7	Supply & Erect	ESKOM Menlyn	May-07
652	132kV Aloeglen Hiehedte	6.5	Supply & Erect	ESKOM East London	Mar-07
796	Sugar cane fire project	n/a	Supply & Erect	TAP	Nov-06
769	88kV Eyestone Graceview	9	Supply & Erect	Heineken Nordvaal	Oct-06
729	Test mast stays	n/a	Supply & Erect	CIS	Jul-06
687	88kV Marane ACP	9	Supply & Erect	ESKOM Menlyn	May-06
639	132kV Soutdrif	17	Stringing only	ESKOM Bloemfontein	Feb-06
OO1	22kV Edenville	272	Erect	ESKOM - Rand & Orange Free State	Jan-05
793	88/132kV New Canada	0.3	Erect	ESKOM Central	Nov-04
751	2 x 88kV Frank furnace Maraung	1.7	Supply & Erect	ESKOM Menlyn	Sep-04
740	11kV Modderspruit Leeukop	11	Supply & Erect	ESKOM Menlyn	Aug-04
728	132kV crossings Gautrain	1.5	Supply & Erect	Bombela/Gautrain	Jul-04
802	88kV rebuild Leeukop Vorna Valley	7.8	Erect	ESKOM Central	Dec-03
690	88kV Marikana Turfshaft	7	Supply & Erect	ESKOM Menlyn	Jun-03
686	132kV Middlekraal Spruitfontein	n/a	Woodpole line	Transdeco	May-03
789	88Kv Lepini Grand Central rebuild	7.8	Erect	ESKOM Central	Nov-02
790	11kV Dwaalboom modification	3	Supply & Erect	PPC	Nov-02
762	132kV Pilansberg Spitskop Part 3	16	Supply & Erect	ESKOM Menlyn	Oct-02
750	Raising 33kV care gate	0.6	Supply & Erect	Cape Gate	Sep-02
727	132kV Mjube loop in	10.5	Supply & Erect	ESKOM Menlyn	Jul-02
679	400kV Grassmere postion 2 towers	n/a	Preassembly	Optic 1	May-02
776	132kV Marang shaft 16	13	Supply & Erect	ESKOM Menlyn	Nov-01
757	Earthing 400kV lines	0.8	Supply & Erect	ESKOM Transmission	Oct-01
651	88kV Brehorn ss	9.5	Supply & Erect	ESKOM Pietersburg	Mar-01
024M D	132kV KDS Hydra	26	Refurbish String	ESKOM Bloemfontein	Nov-00
018M D	44kV Virginia refurbishment	28	Part supply & erect	ESKOM Bloemfontein	Aug-00
016M D	132kV Midas East 3 Gold	1.6	Supply & Erect	ESKOM Kkerksdorp Bloemfontein	Jul-00
015M D	88kV Mmabatho Bulk	13	Supply & Erect	ESKOM Kkerksdorp Bloemfontein	Jun-00

013M D	44kV Grootloeb vgold	6	Supply & Erect	ESKOM Bloemfontein	May-00
034 MD	88kV SA Chrome loop in - out	5	Erect	ESKOM Pietersburg	Feb-00
022M D	88kV Ararat Boschkoppie	17	Erect	ESKOM Pietersburg	Jan-00
618	400kV dragline crossing	0.5	Erect	Vendrust	Nov-99
615	Hardware	n/a	Supply	Plantech	Oct-99
009M D	Replace bird guards 275/400kV	n/a	Erect	ESKOM Megawatt	Aug-99
605	Lesotho stringing (132kV)	55	Erect	ABB Norway	Aug-99
596	11/33kV Lesotho	94	Supply & Erect	ABB Sweden Lesotho Electric	Sep-98
581	132kV Tension strining Janefurse	5	Erect	ESKOM Pretoria	May-98
590	400kV Droer Muld (increase clearance)	n/a	Erect	ESKOM Megawatt	May-98
578	400kV Dragline crossing	0.5	Erect	ESKOM Megawatt	Apr-98
579	88kV Grand Central loop	1	Erect	ESKOM Central Johannesburg	Apr-98
576	88kV Jordan Reitz	5	Supply & Erect	ESKOM Bloemfontein	Mar-98
575	132kV Paradise 'T' ss	3.3	Supply & Erect	ESKOM Pretoria Pietersburg	Dec-97
574	132kV Paradise 'T' line	22	Supply & Erect	ESKOM Pretoria Pietersburg	Nov-97
572	132kV Bypass Spitzkop Gaberouw	0.8	Erect	ESKOM Megawatt	Jul-97
567	132kV Bypass Witkop Leboa	0.8	Erect	ESKOM Megawatt	Jun-97
563	132kV Amandelbult	6	Supply & Erect	ESKOM Pretoria	May-97
566	88kV tower no.23 Trident	0.4	Erect	ESKOM Rustenburg Pretoria	May-97
560	132kV Tarentaal Spencer Gyani	94	Supply & Erect	ESKOM Pretoria	Apr-97
558	Drill HG	n/a	?	Frank?	Mar-97
555	132kV D/C Nkomati	19	Stringing only	ESKOM Industrial electrical	Feb-97
538	2x22kV Winiansrus INEW Koorfontein	2x4.6	Erect	INGWE	Dec-96
554	Earth & Drops	n/a	Supply	ESKOM Rosherville	Dec-96
541	132kV Klein Olifants Kromfontein	20	Supply & Erect	ESKOM Witbank Pretoria	Sep-96
530	275kV Bighorn Pluto construct bypass	0.5	Labour	ESKOM Megawatt	Aug-96
540	66kV Lindum Reefs 3 X crossing	4.8	Supply & Erect	Lindum Reef	Aug-96
529	275kV Camden Komati restringing rail crossing	0.6	Labour	ESKOM Witbank Simmerpan	Jul-96
525	275kV Esselen Pelly refurbish foundations	3.7	Labour	ESKOM Simmerpan	Jun-96
517	88kV Ywer Leensfrom Restringing	5.3	Supply & Erect	ESKOM Bloemfontein	May-96
507	132kV Thabong East D/C	2	Supply & Erect	ESKOM Bloemfontein	Mar-96
509	Rearrange Princess network (132kV)	0.8	Erect	ESKOM Johannesburg	Mar-96
496	132kV D/C Diepkloof line	n/a	Supply & Erect	ESKOM Johannesburg	Dec-95



493	Repair tower 400kV Hydra	n/a	Labour	ESKOM Megawatt	Jul-95
494	132kV Sorats concrete D/C line	5	Supply & Erect	ESKOM Bloemfontein	Jul-95
474	West ? Gold 132kV loop in line	0.8	Supply & Erect	ESKOM Bloemfontein	Jun-95
488	Deviation of 88kV lines Snowdon ss	0.9	Labour	ESKOM Megawatt	Jun-95
490	132kV towers at Acornhoek Nwatel	0.5	Labour	ESKOM Pretoria	Jun-95
492	Crossing 400kV drag line	0.7	Drop and reconnect conductor	ESKOM Megawatt	Jun-95
485	Crossing 400kV drag line	0.7	Drop and reconnect conductor	ESKOM Megawatt	May-95
463	Re-arrange 132kV Nevis Benoni	2.5	Supply & Erect	ESKOM	Mar-95
469	22/132kV Deviations	2.6	Erect	ESKOM	Mar-95
476	Refurnish 400kV Hennes Mercury	0.5	Raise clearance	ESKOM	Mar-95
457	Recon SAR Dilewanokop Nigel (88kV)	24.9	Erect	ESKOM	Feb-95
454	Replace Susul 88kV Gordelfos	6.4	Supply & Erect	ESKOM	Nov-94
445	Recon Losberg Tweefontein (88kV)	20.7	Erect	ESKOM	Oct-94
448	Repair tower 275kV Eiger Letabo	8.5	Supply & Erect	ESKOM	Oct-94
435	Recon Libanon Network (88kV)	37	Erect	ESKOM	Sep-94
434	Replace 275kV tower PL/Watershed	n/a	Supply & Erect	ESKOM	Apr-94
425	88kV Leherutshe	18	Supply & Erect	Becor	Mar-94
431	Recon 3 shaft VlakGM (88kV)	12.5	Erect	ESKOM	Mar-94
419	ZWB/Tedd/Golfview	5	ABB Feralin	PLS	Jan-94
416	88kV Snowdon VR RWB	13	Supply & Erect	ESKOM	Dec-93
413	88kV Zeerust line	9	Supply & Erect	ESKOM	Oct-93
406	Snowdon Residentia recon (88kV)	40.3	Erect	ESKOM	Sep-93
410	Lindum Reefs 44kV deviation	5	Erect	ESKOM	Sep-93
399	88kV Union Aero Kathlehong	3.8	Supply & Erect	ESKOM	Aug-93
405	Snowdon Princess T recon (88kV)	11.2	Erect	ESKOM	Aug-93
391	88kV Northrand Phosphate	4.9	Supply & Erect	ESKOM	Jul-93
386	22kV Harrismith 42nd Hill	3	Supply & Erect	ESKOM/Bloemfontein	Jun-93
387	44kV Waterpan Calc Products	5.6	Erect	ESKOM	Jun-93
381	88kV Everite Snowdon 1 & 2 recon	32	Recondition	ESKOM/Johannesburg	Apr-93
382	Meyerton Snowdon recon	3.1	Recondition	ESKOM	Apr-93
365	88kV Khuma	4	Supply & Erect	ESKOM/Khuma	Nov-92
372	400kV Arnot By pass	0.2	Erect	ESKOM/Johannesburg	Nov-92
380	88kV Emmerdal Roshnee recon	21	Recondition	ESKOM/Johannesburg	Nov-92
357	Thornham electrical	15	Erect	ESKOM/East	Oct-92

	reticulation			London	
359	44kV Upgrade Princess Turk shaft	5	Erect	ESKOM/Johannesburg	Oct-92
356	Replace steel on 132kV line	n/a	Erect	ESKOM/East London	Jun-92
344	88kV Argon loop line	1	Erect	ESKOM/Johannesburg	May-92
355	22kV Nieu Bethesda 6	69	Supply & Erect	ESKOM/East London	May-92
340	Alicedale spur lines	6	Erect	ESKOM/East London	Apr-92
339	Add spur lines	13	Erect	ESKOM/East London	Mar-92
321	400kV Grassridge Poseidon	11	Tower pre assembly	ESKOM/PLS	Nov-91
322	132kV Atteridgeville No 2	4.8	Erection+stringing	PLS/Atteridgeville	Sep-91
305	Sterkfontein By pass	1	Erect	ESKOM/Orange Free State	Aug-91
320	400kV Zeus By pass	0.3	Erect	ESKOM/PLS	Aug-91
307	Groenvolenlange By pass	1.5	Erect	ESKOM/Orange Free State	Jul-91
303	132kV Port Elizabeth	13	Tower erection	CPP/PE	Jun-91
293	132kV Swaziland	110	Tower erection	CPP/ESKOM	Apr-91
300	33kV Wild South - Genmin	2.5	Supply & Erect	GENMIN	Feb-91
285	22kV Aberdeen 3	61	Supply & Erect	ESKOM/East London	Dec-90
284	22kV Nieu Bethesda	60	Erect	ESKOM/East London	Aug-90
271	66kV Komani-Elliot	10	Erect	ESKOM/East London	May-90
275	22kV Knapdaal - Modderbult	56	Supply & Erect	ESKOM/East London	May-90
259	132kV Midas - deep levels (Steel)	28	Foundation+towers	PLS/ESKOM	Apr-90
238	132kV Kwagga -Lotus T (Steel)	1.5	Foundation+towers	PLS/Pretoria	Mar-90
270	22kV Ehleboom Mine	5	Supply & Erect	GENMIN	Jan-90
255	22kV Koolspruit	64	Erect	ESKOM	Sep-89
222	132kV Boksburg (Steel)	6	Foundation+towers	PLS/CC Boksburg	May-89
223	132kV Atteridgeville (Steel)	2	Foundation+towers+stringing	PLS/Atteridgeville	Apr-89
206	132kV Pretoria (Steel)	7	Tower erection	PLS/CCP	Feb-89
197	22kV Fauriesmith	270	Erect	ESKOM	Nov-88
211	11kV Bethulle	87	Erect	ESKOM - East London	Aug-88
180	132kV Gaborone (Steel)	6	Supply & Erect	BPC Botswana	Jul-88
163	132kV Thabong (Steel)	7	Supply & Erect	Thabong/Cahi W&B	May-88
167	22kV Wepener	160	Erect	ESKOM	May-88
177	11kV Marq West+Kroonstad	129	Erect	ESKOM	Mar-88
159	11kV Windfield	55	Erect	ESKOM	Jan-88
155	88kV VanDerBijl Park (Steel Park)	5	Towers/Stringing	PLS/Plantech	Oct-87
150	11kV Marq+Henneman+Ventersburg	97	Erect	ESKOM	Oct-87

	rg				
124	22kV Frankfort	402	Erect	ESKOM	Oct-87
184	33kV Wildebeest South	3	Supply & Erect	Gencor	Aug-87
122	22kV Delareyville Extn	270	Erect	ESKOM	Jun-87
170	33kV Bafokeng North	5	Supply & Erect	Gencor	Jun-87
154	132kV Wingate Njala (Steel)	5	Tower erection	PLS/PCC	Mar-87
139/4 0/41	33kV line/Telephone lines	04-Jan	Supply & Erect	Gencor	Sep-86
113	132kV Witbank (Steel)	0.6	Supply & Erect	Witbank/Plantech	Jul-86
112	11kV Moedville	29	Erect	ESKOM	Jun-86
O89	22kV Bafokeng South	4	Supply & Erect	Gencor	May-86
O97	11kV Lindleyspoort	45	Erect	ESKOM	Apr-86
O78	132kV Bronkhorstspuit (Steel)	17	Supply & Erect	ERDB/BHS/CA Du Toit	Feb-86
O77	11kV Moedville	176	Erect	ESKOM	Nov-85
O21	22kV Delareyville	532	Erect	ESKOM	Jul-85
O82	Modificaaion to 11kV line	1	Supply & Erect	Krugersdorp Municipality	May-85
O72	11kV Zululand Anthracite	4	Supply & Erect	Gencor	Dec-84
O44/5 0	Bafokeng Shaft 7	Telephon e lines	Supply & Erect	Gencor/Impala	Oct-84
O38	Apollo test station	Test structure	Foundation & Erect	Powerlines	Aug-84
O36	33kV Bafokeng North Mine	4	Supply & Erect	Gencor/Impala	May-84
O18	88kV Mmabatho (Steel link)	12	Supply & Erect	BOP govt/Cahi, Dev & B	Mar-84
O26	33kV Bafokeng South Mine	8	Supply & Erect	Gencor/Impala	Feb-84
O22	11/11kV Dwaalboom	5	Supply & Erect	PPC/ELB	Nov-83
OO9	11/22kV Dwaalboom	13	Supply & Erect	PPC/WLPU	Aug-83
OO4	22kV Vergenoeg Mine	36	Erect	ESKOM - Rand & Orange Free State	Jun-83





[www.meleeselectrical.co.za](http://www.meleeselectrical.co.za)



[info@meleeselectrical.co.za](mailto:info@meleeselectrical.co.za)



+27 83 858 5071 / +27 87 510 1075



986 Main Road, Crowthorne, Kyalami